
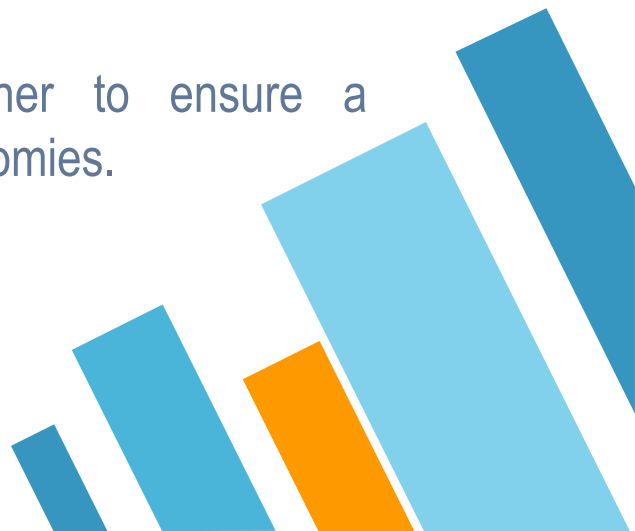


Flanged Intrasccleral IOL fixation a.k.a yamane technique

Ramy Riad, MD
Ophthalmology Consultant
Cairo University
Al Watany Eye Hospital




- 
- » **PEARL NO. 1:** Technically any three-piece IOL can be used in the Yamane technique .
 - » **PEARL NO. 2:** Loosely attach each needle
 - » **PEARL NO. 3:** Fill syringes with a small amount of balanced saline
 - » **PEARL NO. 4:** Use an anterior chamber maintainer to ensure a firm eye during the creation of the sclerotomies.
- 



Case 1

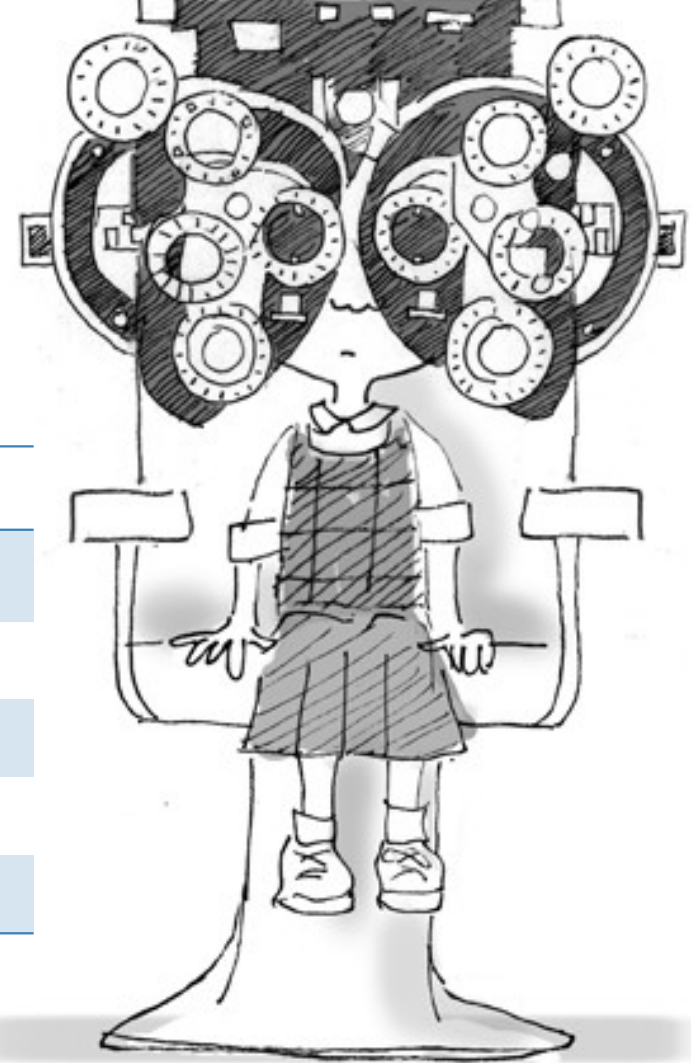


Case Presentation

- » **C/O:** A 7 year old girl presented to the clinic with post traumatic drop of vision in the right eye x 3 weeks
 - » **POH:** OU Lensectomy x 6 years (elsewhere)
OD IOL Implantation x 4 months (elsewhere)
 - » **PMH:** Negative Medical History
- 

On slit-lamp examination

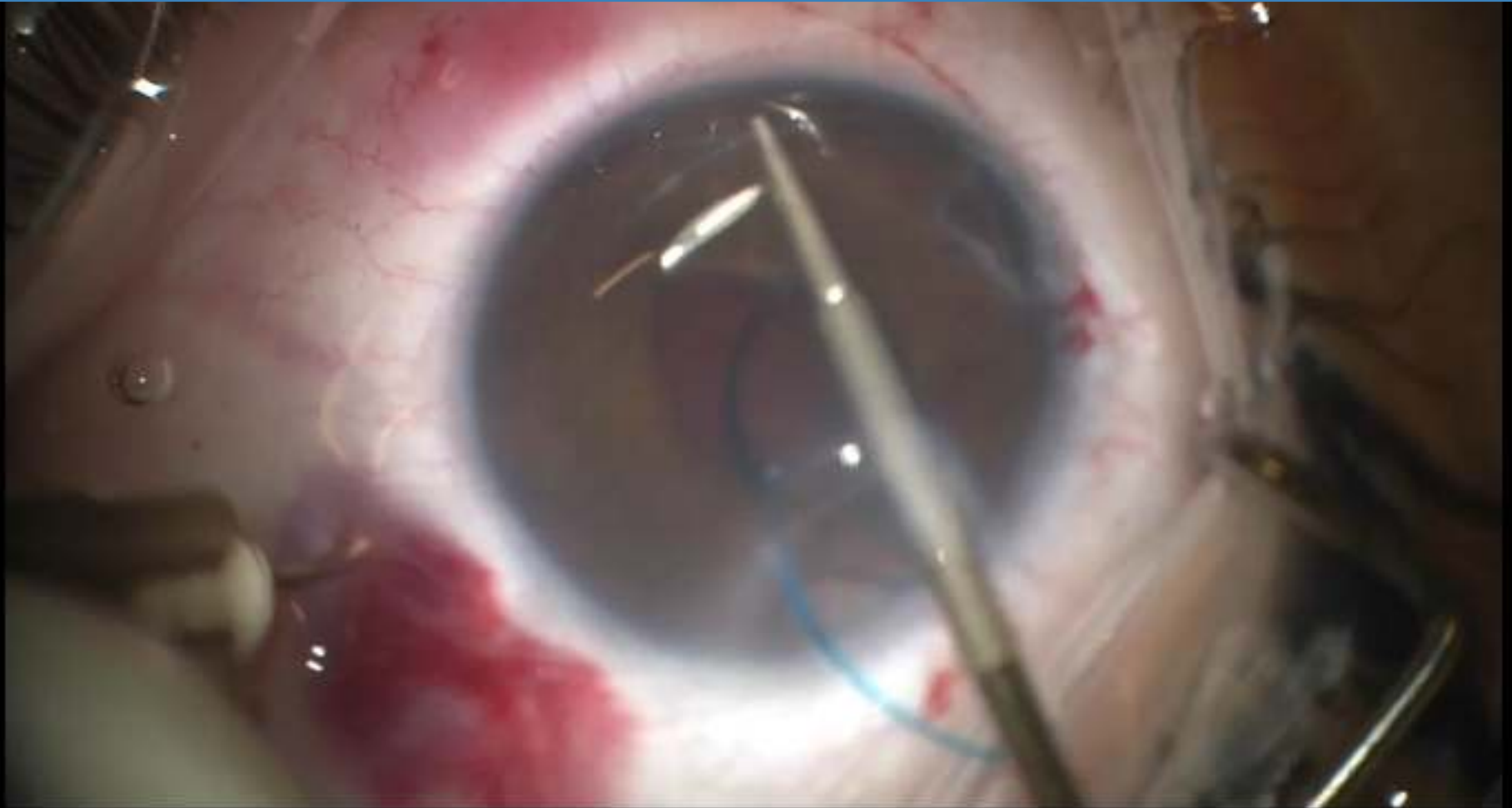
OD		OS
0.5	BCVA	0.6
-4.75/-1.00x150	AR	+9.50/-1.50x50
sluggish, irregular	Pupil	sluggish, regular
IOL dislocation	AS	Aphakia
Quiet fundus	PS	Quiet Fundus



OD IOL READJUSTMENT USING THE YAMANE TECHNIQUE




OS IOL IMPLANTATION IN AN APHAKIC EYE USING THE YAMANE TECHNIQUE





3 weeks post-operatively

OD		OS
0.5	BCVA	0.6
-3.50/-0.75x5	AR	-0.75/-0.75x180
IOL in place	AS	IOL in place
Quiet fundus	PS	Quiet Fundus






Case 2

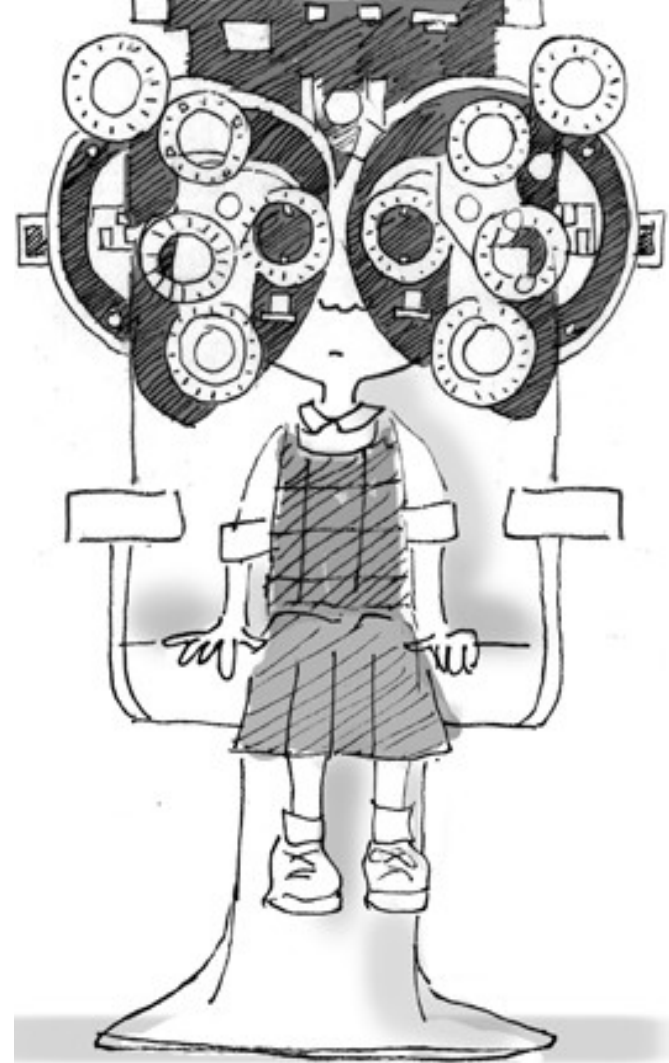


Case Presentation

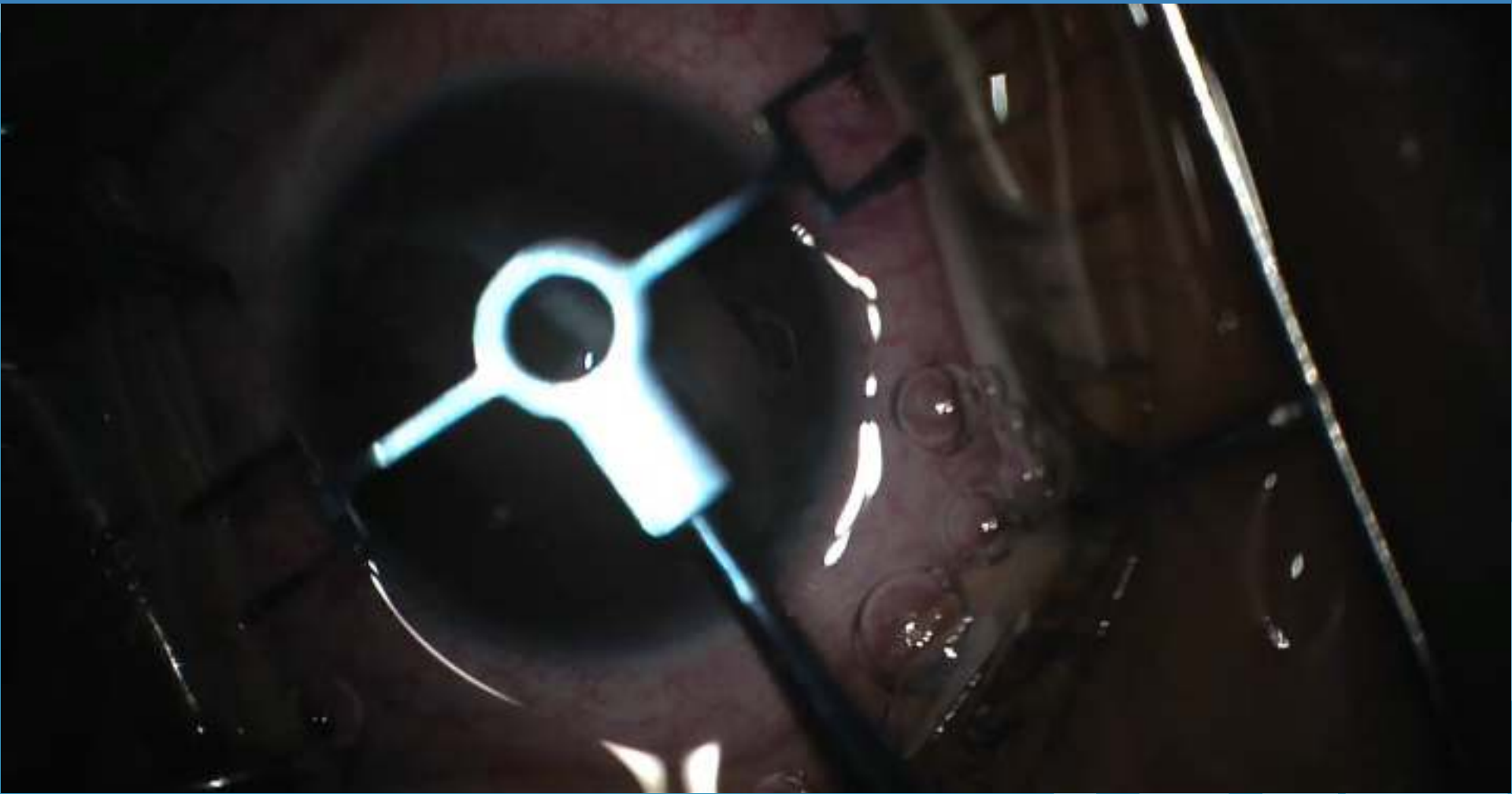
- » **C/O:** A 9 year old boy presented to the clinic with foggy vision in his right eye.
 - » **POH:** OD Ruptured Globe Repair x 15 months
OD Vitrectomy x 14 months
 - » **PMH:** Bronchial Asthma
- 

On slit-lamp examination

- » **BCVA:** 0.2
- » **AR:** +13.25/0.50 x 115
- » **Pupil:** dilated, non-reactive, rounded
- » **AS:** radially sutured corneal scar, aphakia

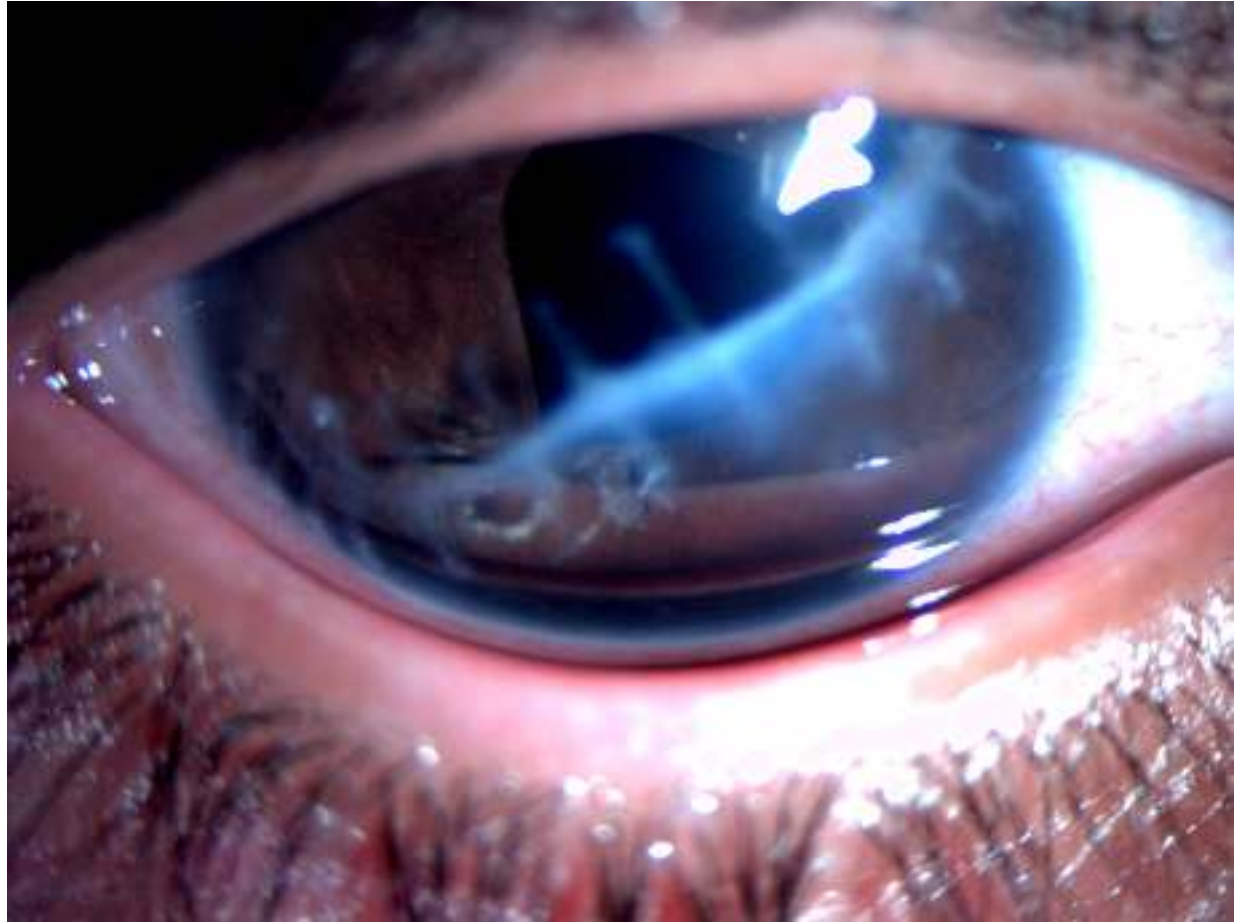


IOL IMPLANTATION THROUGH HAZY MEDIA USING THE YAMANE TECHNIQUE





**2 weeks
post-operatively**






Case 3



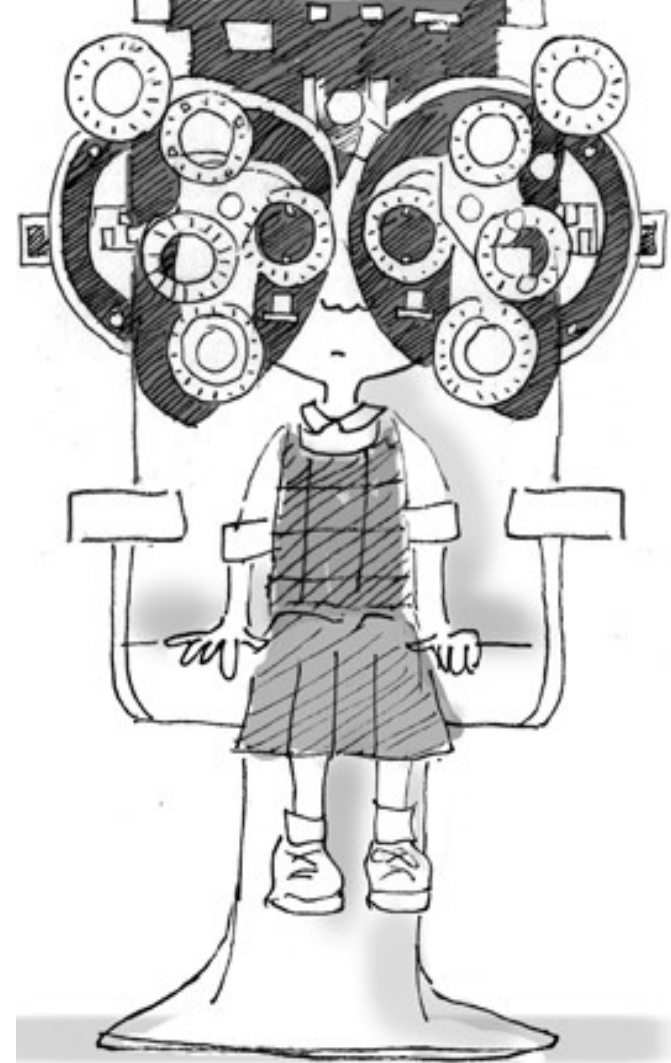
Case Presentation

- » **C/O:** A 34 year old man presented with post traumatic rupture globe (iron object)
 - » **POH:** OD Ruptured Globe Repair x 3 months
OD Vitrectomy x 4 months
 - » **PMH:** Negative Medical History
- 



On slit-lamp examination

- » **BCVA:** 0.4
- » **AR:** +7.75/-2.50x95
- » **Pupil:** non-reactive, irregular shape and mydriasis
- » **AS:** aphakic, iris tissue loss



IOL IMPLANTATION USING THE YAMANE TECHNIQUE + PUPILLOPLASTY





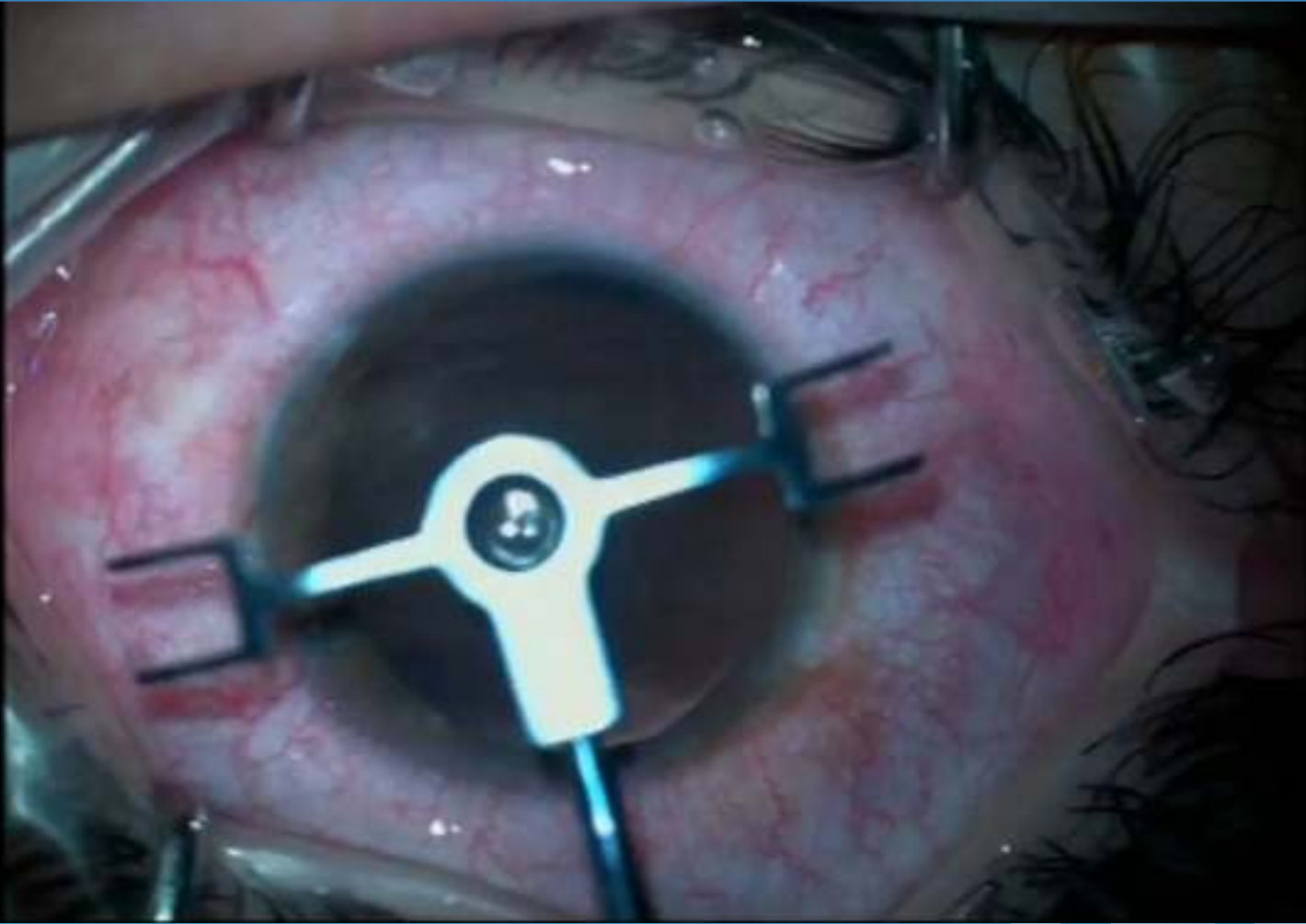
3 weeks post-operatively



OD	
BCVA	0.4
AR	+0.50/-2.00x90
AS	IOL in place
PS	Quiet Fundus



Case 4

IOL FIXATION YAMANE TECHNIQUE + DECENTERED PUPILLOPLASTY



- 
- 
- » TIP NO. 1: MARK THE NEEDLE ENTRY SITES AT THE START
 - » TIP NO. 2: PERFORM THOROUGH ANTERIOR VITRECTOMY
 - » TIP NO. 3: USE APPROPRIATE INSTRUMENTATION
 - » TIP NO. 4: ANGLE THE NEEDLES FOR HAPTIC FIXATION
 - » TIP NO. 5: USE APPROPRIATE NEEDLES
 - » TIP NO. 6: EXTERNALIZE THE HAPTICS SIMULTANEOUSLY
 - » TIP NO. 7: MELT THE HAPTIC TIPS
 - » TIP NO. 8: IF NECESSARY, CENTER THE IOL



**THANK YOU FOR
YOUR ATTENTION**

